



IOT LED TENNIS LIGHT
230W-420W

> Features of OT Series

OT LED sports light are a game changer for court lighting applications. The low profile OT series utilizes high performance LEDs and precise optics to produce superior levels of illumination and uniformity. Compared with typical HID court lighting systems, the energy load is reduced by 50%.

- High Performance, full cutoff LED.
- More than 50% Energy Reduction vs. 1000W Metal Halide.
- L90B10 >52,000 hours expected life.
- Direct retrofit mounting.
- Matching poles & brackets available.
- Light weight for easy installation (23 lbs.).
- Consistent lumen output over fixture life.
- Instant on and dimmable
- Optional wireless control available.
- Standard 5-Years warranty.
- Built-in surge protection.
- Photometric tested in accordance with IESNA standards.



be flexible with **Light** Dual LEDs CCT adjustable solution



> Explore the Flexibility

Cool white

Warm white

why should be flexible with *Light*

- A colder white light optimizes performance while a warmer one is more favorable to people and animal natural cycles. What if the light can be flexible? The OT **Dual LEDs CCT adjustable solution** offers you the choice to use the right color temperature at any time. Whether it relies on preprogrammed scenarios, uses sensors or a mix of all, the CCT adjustable solution offers you the flexibility to provide the right level with the right color temperature at the right place and the right time.
- With using two types of LEDs (e.a. 3000K and 5000K), you can select one of the two color temperatures or mix both at various levels (dimming) to create a palette of color temperatures.
- As lenses cover the complete LED, the light distribution remains unchanged whatever you select.

> Photometrics

Accurate light distribution design, **Flexible** to match the project requirements:

TYPE III (T301)



TYPE III (T302)



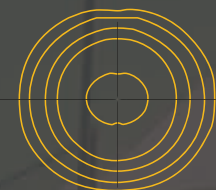
TYPE IV (T401)



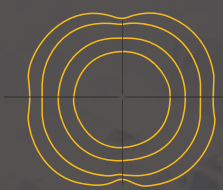
TYPE IV (T402)



TYPE V (T501)



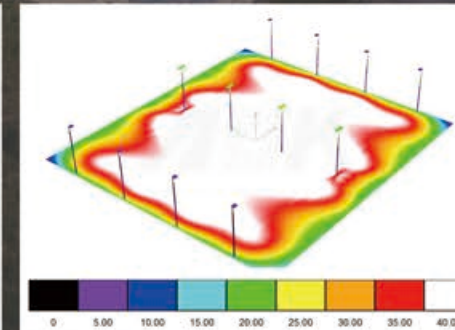
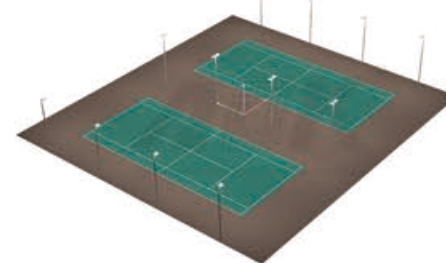
TYPE V (T502)



TYPE V (T512)

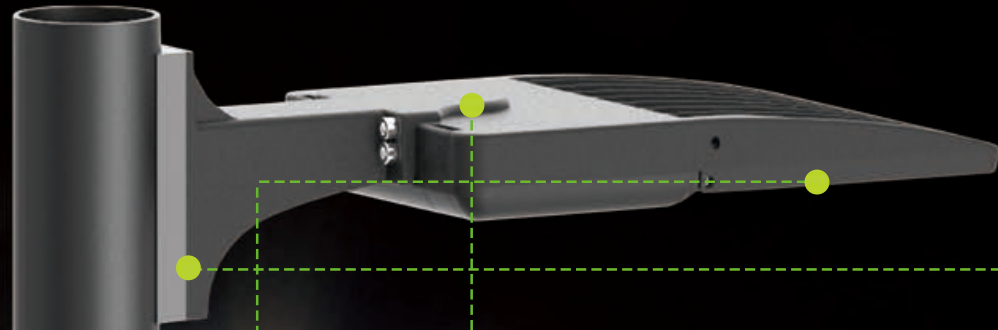


Project Simulation Effect



High performance, multi-faceted, reflector provides uniform Forward Throw (FT) distribution with sharp backlight cutoff. Photometric data is tested in accordance with IESNA guidelines.

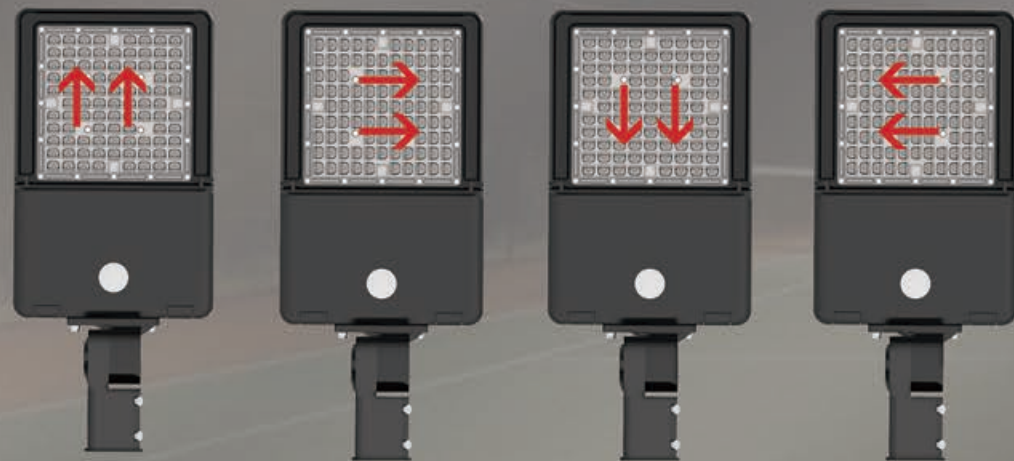
> Explore the Flexibility



• Buckle design. Top cover space reserved for photocell sensor and bottom reserved for occupancy or PIR sensor with waterproof seal. **Flexible** for future installation.



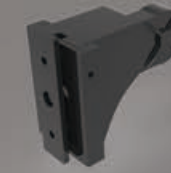
• **Flexible** design with 90 ° field-rotatable optics, simply rotate the lens and get light distribution in right direction in an instant.



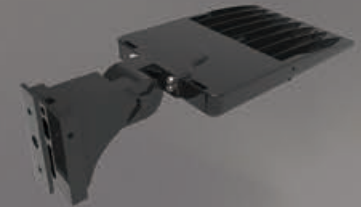
• Up to 7 installation methods (brackets) can be suitable for different installation scenarios, quickly adapt to the needs of the project. Convenient and **Flexible**.



Type A
Slipfitter



Type B
Adjustable Arm Mount



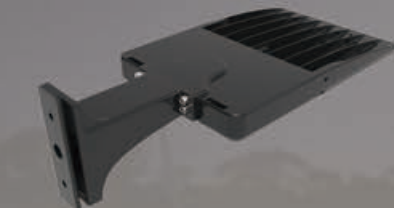
Type C
Trunnion Mount



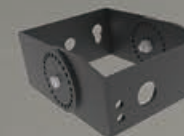
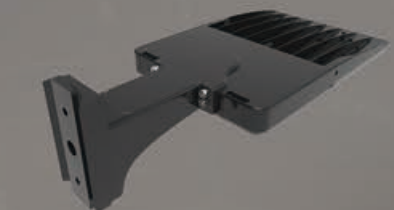
Type D
Slide & Lock Mount



Type E
Square Pole Mount



Type F
Round Pole Mount



Type G
Trunnion Mount



► Application Reference



Parameter Table

Electrical Data			
Model	230WoT	300WoT	420WoT
Power(W)	230 W	300 W	420 W
Input voltage	100-277VAC, 50/60Hz, 347/480VAC optional		
THD	7.70%	3.90%	7.70%
PF	0.99	0.99	0.99
Operating temperature	-40°C to 50°C (-40 °F to 122 °F)		
Control Option	DALI, 1-10V/ PWM / timer dimming, Nema, Zhaga, Presence detection sensor. Dim-to-Off with standby power <= 0.5W. DIP switch.		
Driver	Meanwell / Inventronics/Sosen		
Surge Protection	10kV / 20kV optional		
Photometric Data			
Efficacy(lm/W) (LUMILEDS,Std. Dev. ±3%)	T301	135 lm/W	126 lm/W
	T302	160 lm/W	153 lm/W
	T401	135 lm/W	131 lm/W
	T402	160 lm/W	149 lm/W
	T501	133 lm/W	130 lm/W
	T502	157 lm/W	145 lm/W
Efficacy(lm/W) (SOUL,Std. Dev. ±3%)	T302	170 lm/W	156 lm/W
	T402	170 lm/W	150 lm/W
	T502	172 lm/W	160 lm/W
Luminous flux (lm) (LUMILEDS)	T301	31123 lm	37868 lm
	T302	36908 lm	45817 lm
	T401	31121 lm	39157 lm
	T402	36911 lm	44763 lm
	T501	30492 lm	38953 lm
	T502	36052 lm	46479 lm
Luminous flux (lm) (SEOUL)	T302	39156 lm	50167 lm
	T402	39185 lm	48053 lm
	T502	39569 lm	51087 lm
ULOR	= 0%, @ Luminaire inclination 0°		
CCT	3000K, 4000K, 5000K, 5700K, 6500K		
CRI	70Ra, 80Ra, 90Ra optional		
Beam angle	Type III/Type IV/Type V/T303/T512		
LED Manufacturer	LUMILEDS/SEOUL		
LED model	Lumileds 3030/Lumileds 5050/SEOUL 5050		
Working current of single LED (mA)	T301	0.099	0.128
	T302	0.055	0.071
	T401	0.099	0.128
	T402	0.055	0.071
	T501	0.099	0.128
	T502	0.055	0.071
Lens	Polycarbonate (Better impact resistance than glass)		
Mechanical Data			
IP/IK	IP66/IK10, according to standard EN 60529 and EN 62262		
Vibration resistance	3G, conform to standard IEC 68-2-6.		
SCx	Front: 0.179268m²; Front-side: 0.0196 m²; Side: 0.03342 m²	Front: 0.201256m²; Front-side: 0.0269 m²; Side: 0.04686 m²	
Housing/Materials	Heavy-duty die-cast aluminum (EN AC-46100)		
Surface treatment	Anti-UV thermosetting polyester / 80 micron epoxy primer + Anti-UV thermosetting polyester (for extremely corrosive environments).		
Painting	Black, Bronze, Custom request		
Cable	Pre-wired with a 70 cm cable (Other lengths on request)		
Mounting	Slip fitter/Arm mount/Yoke mount/Slide & lock/Square pole/Round pole/Trunnion		
Others			
Lifespan	L90B10 > 52000h, @Tq 25°C		
Warranty	5 years (Warranty extension up to 10 years on request)		
Certification	UL/cUL/DLC/FCC/CE/ENEC/SAA/RoHS		
Product size	600*410*185mm	650*423*380mm	650*440*390mm
Net weight(±10%)	5.6kg	8.9kg	9.6kg
Recommended installation height	General 4-12m, based on actual project requirements		
Application field	Suitable for area lighting such as Tennis court		

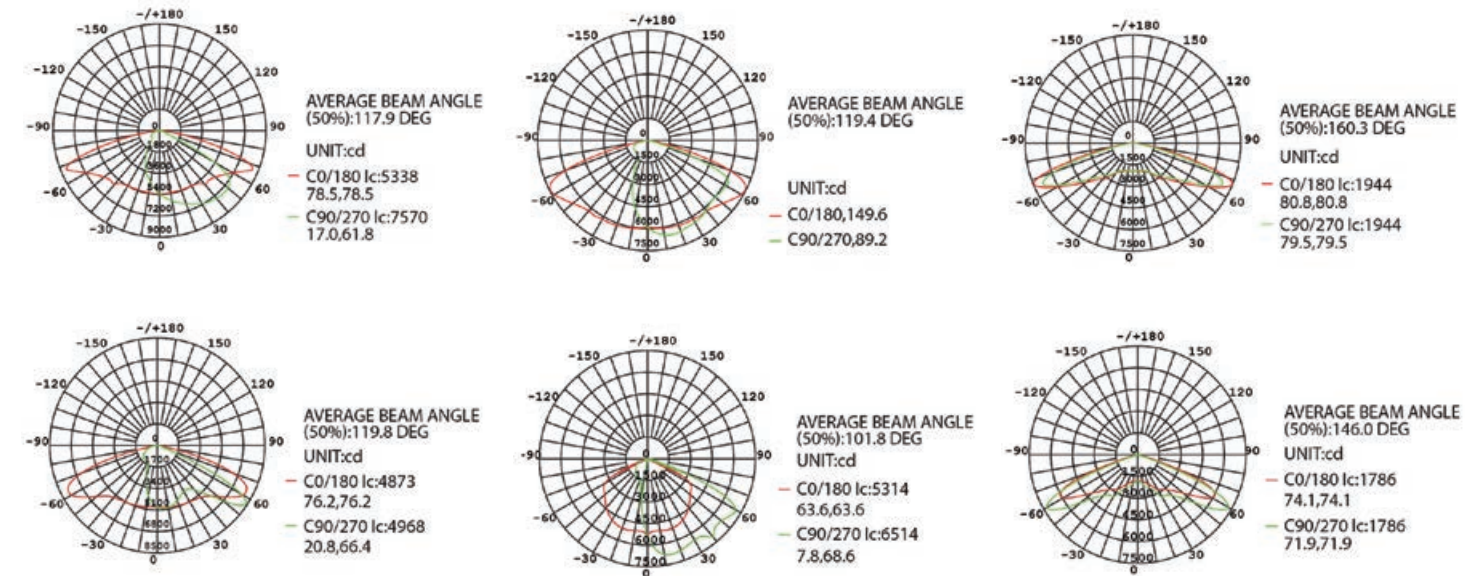
Dual LEDs CCT adjustable solution specification

Watt(W)	LED Chips	CCT	Current Output(mA)	Power(W)	Efficacy		
					T302	T402	T502
230	C84+W84	3000	1315	228.5	144	147	149
		4000		218.6	163	166	168
		5000		225.1	158	161	161
		5700		228.5	152	155	157

Ordering Information

Aura Renewable Energy	WATTS	VOLTAGE	LED CHIPS	TYPE OF SENSOR	CCT&CRI	DISTRIBUTION	MOUNT	HOUSING	OPTIONS
	230WoT	NV=100-277V	L5=LUMILED 5050	00=Without Sensor	3070=3000K 70CRI	T3=TYPE 3	A=Slip Fitter	BK=Black	SPD 10KV
	300WoT	HV=347/480V	S5=SOUEL 5050	SN=Motion Sensor	4070=4000K 70CRI	T4=TYPE 4	B=Adjustable Arm	BZ=Bronze	SPD 20KV
	420WoT		W3=SOUEL W3	PH=PhotoCell DV=Dimmable	5070=5000K 70CRI 5770=5700K 70CRI 6570=6500K 70CRI 3080=3000K 80CRI 4080=4000K 80CRI 5080=5000K 80CRI 5780=5700K 80CRI 6580=6500K 80CRI	T5=TYPE 5 T512=TYPE T5WQ T303=T3VS	C=Yoke Mount D= Slide and Lock E= Square Ploe F= Round Ploe G= Trunnion Mount	WH=White RD=Rde BL=Blue	DIP Switch

Photometry

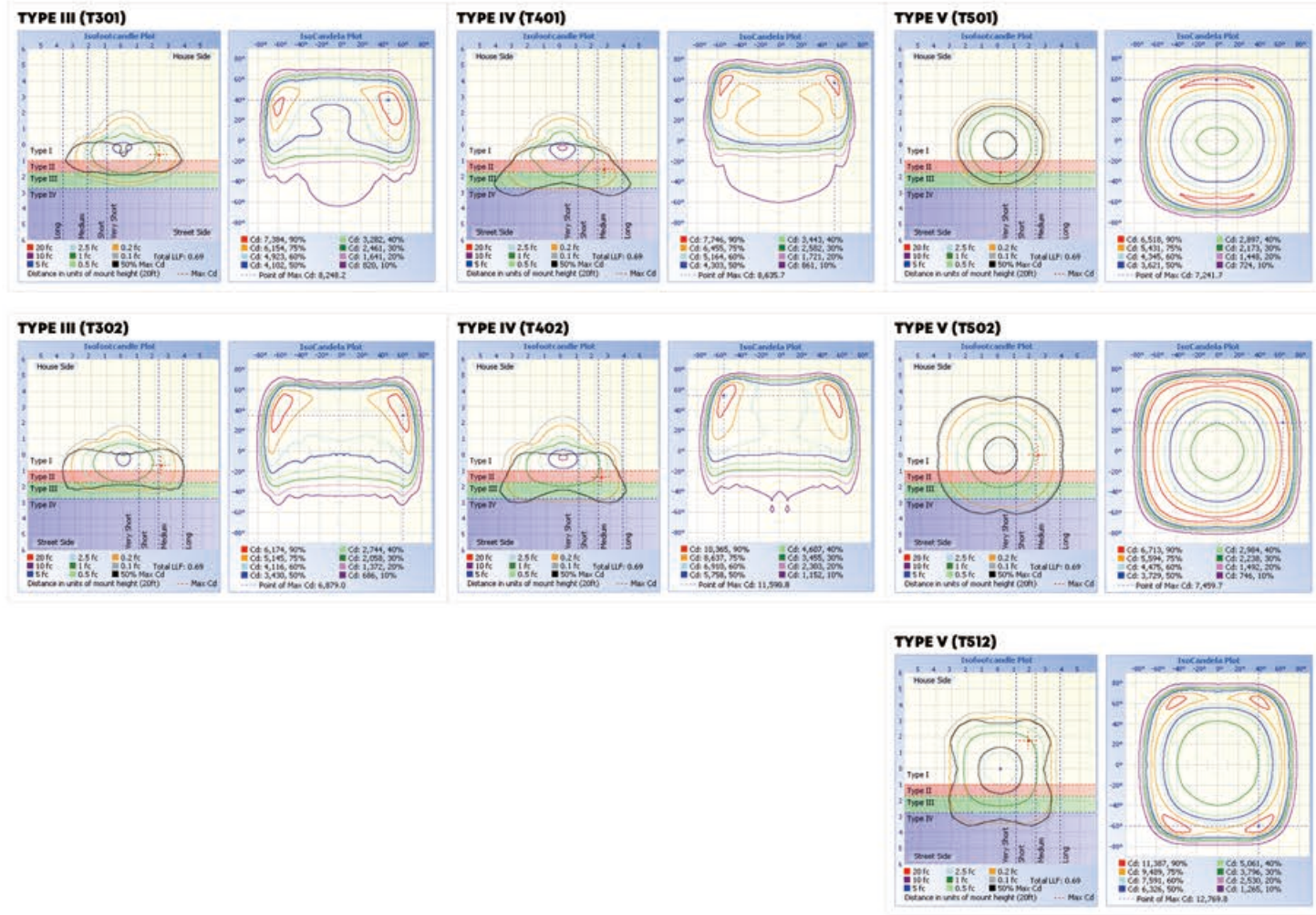


*All published Luminaire photometric testing performed to IESNA LM-79-08 standards by a NVLAP accredited Laboratory.

OT Series Specification Sheet

*Due to the constant improvements in product development, individual parameters might change. Please refer to our sales or R&D team for most up-to-date content as specifications are subject to change without notice.

Illuminance Diagram

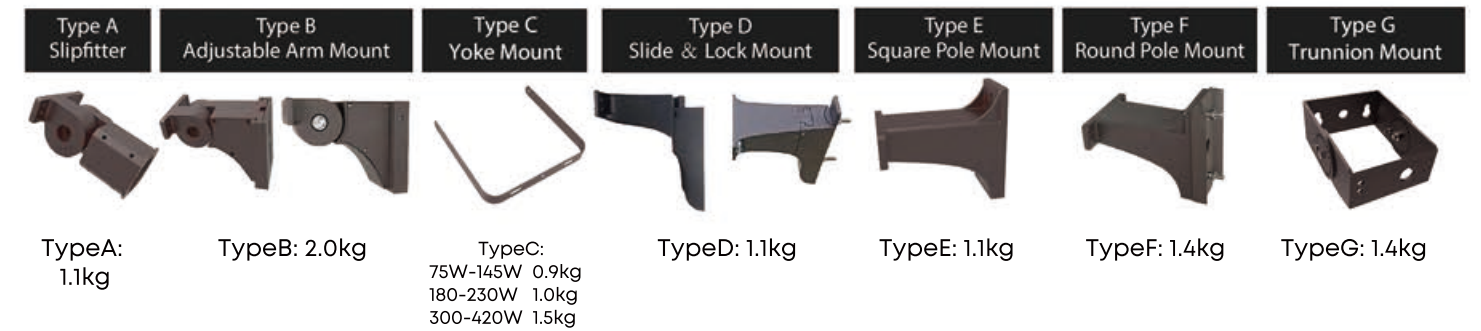


Construction Features

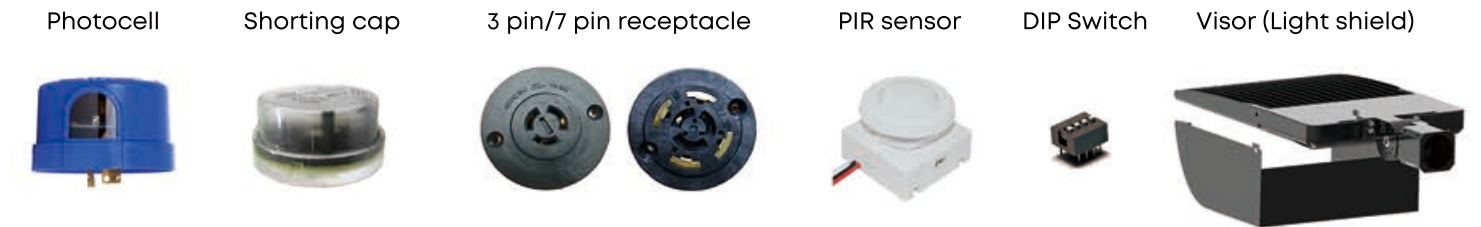
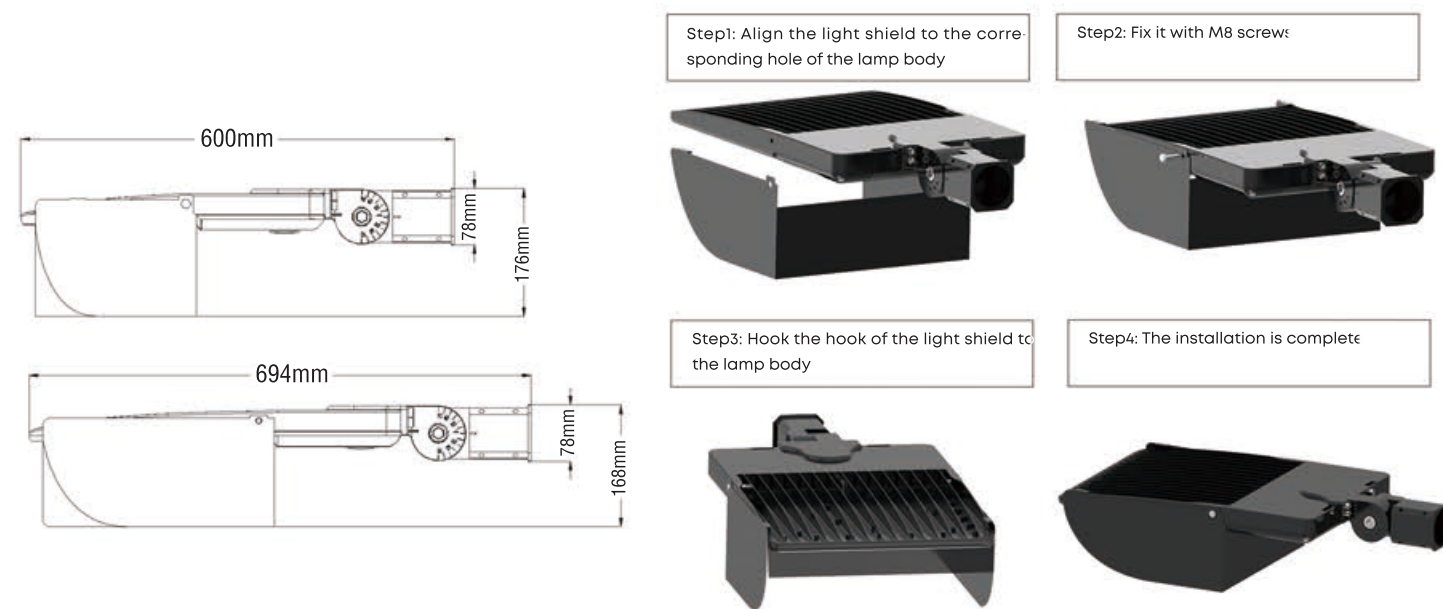


1. Super efficient heat dissipation layer
2. Light source: PCB board with LEDs
3. Die casting aluminum unibody main housing, IP66
4. Space for 5/7 pin receptacle upgradable for photocell sensor and smart systems
5. Tool free buckle to driver access panel
6. Optical grade rotatable PC lens Type III / IV / V
7. Top level 1-10V dimmable driver 100-277V / 347V / 480V optional
8. Tool free driver access panel with space reserved for occupancy sensor covered by removable cap fits with Wattstopper FSP sensor
9. Surge protection device
10. Bracket access panel for wiring
11. Exchangable bracket fits round / square pole. Other brackets optional such as yoke, trunnion, etc

Accessories



Dimension and Visor Installation Method



*As the products are upgraded, the accessories may differ from those described in the pictures. Please consult with our sales team for updated details and order separately.