

aura
CLEAN ENERGY



IOT LED AREA LIGHT
PARKING LOT LIGHT

> Features of OT Series

- Precision engineered lens made of optical grade Mitsubishi PMMA for maximum light intensity.
- Type III, Type IV, Type V distributions are available, precise photometric for the right project.
- Buckle design, tool-free maintenance. Top cover space reserved for photocell sensor and bottom reserved for occupancy or PIR sensor with waterproof seal.
- Delivers improved visual comfort by lower glare and providing a wider smoother and more uniform light output. BUG=0.
- Available in 3000K, 4000K, 5000K, 5700K, 6500K adjustable CCT, switch from warm white to cool white.
- Lumileds or Seoul LED sources available. Efficacy 140lm/W and 170lm/W or 180lm/W optional, higher lumen output, precision light pattern ensure more energy saved.
- Minimum CRI of 70, 80, and 90 optional.
- Cutoff classification: Cut-off, no up light pollution.
- 7 different mounting brackets simplify your installation job; make installation to any style of pole quicker and easier.
- Customized pole adapters are available for special installation.



UP TO 180 lm/W	CRI 70/80/90	DIM	TOOL FREE MAINTENANCE	ULR =0	L90B10 >52000hrs @ 25°C
	• 3000K • 4000K • 5000K • 5700K • 6500K	100-277V OR 347-480V 50/60HZ	Working Temperature Environment -40°C~50°C (-40°F~+122°F)	IP66 IK10	THD <18%

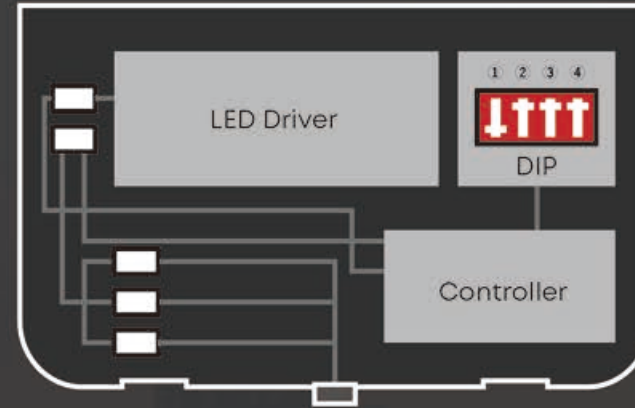
be flexible with **Light** Dual LEDs CCT adjustable solution

> Explore the Flexibility



why should be flexible with *Light*

- A colder white light optimizes performance while a warmer one is more favorable to people and animal natural cycles. What if the light can be flexible? The OT **Dual LEDs CCT adjustable solution** offers you the choice to use the right color temperature at any time. Whether it relies on preprogrammed scenarios, uses sensors or a mix of all, the CCT adjustable solution offers you the flexibility to provide the right level with the right color temperature at the right place and the right time.
- With using two types of LEDs (e.a. 3000K and 5000K), you can select one of the two color temperatures or mix both at various levels (dimming) to create a palette of color temperatures.
- As lenses cover the complete LED, the light distribution remains unchanged whatever you select.



Flexible to match the environment:
The **Dual LEDs CCT adjustable solution** allows you to easily respond to your color temperature needs and quickly adjust the range of the lamp without much effort.

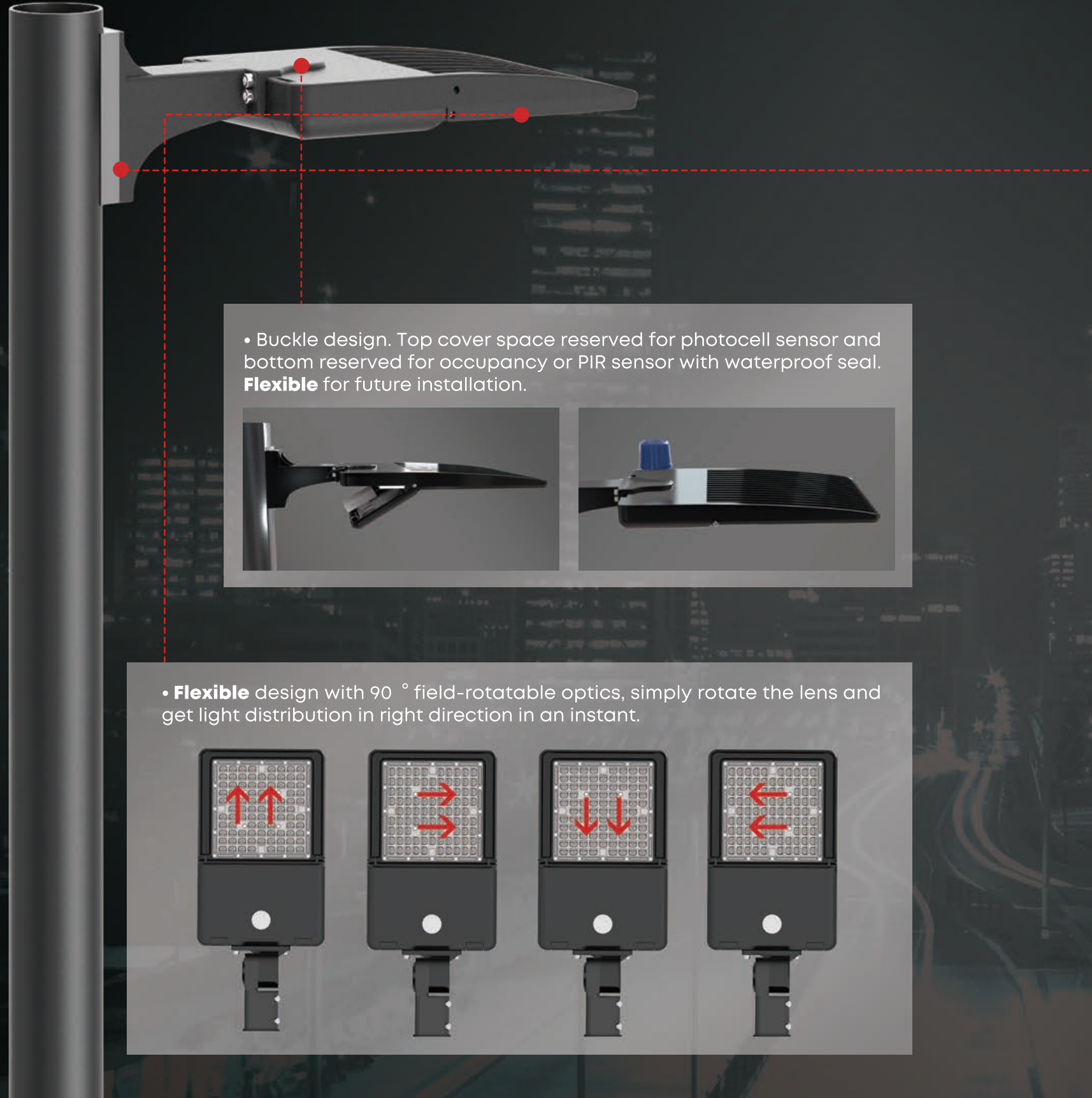
- Dial 1 - switch off, fixture in 5700K;
- Dial 2 - 5000K;
- Dial 3 - 4000K;
- Dial 4 - 3000K;

> Photometrics

Accurate light distribution design, **Flexible** to match the project requirements:



> Explore the Flexibility



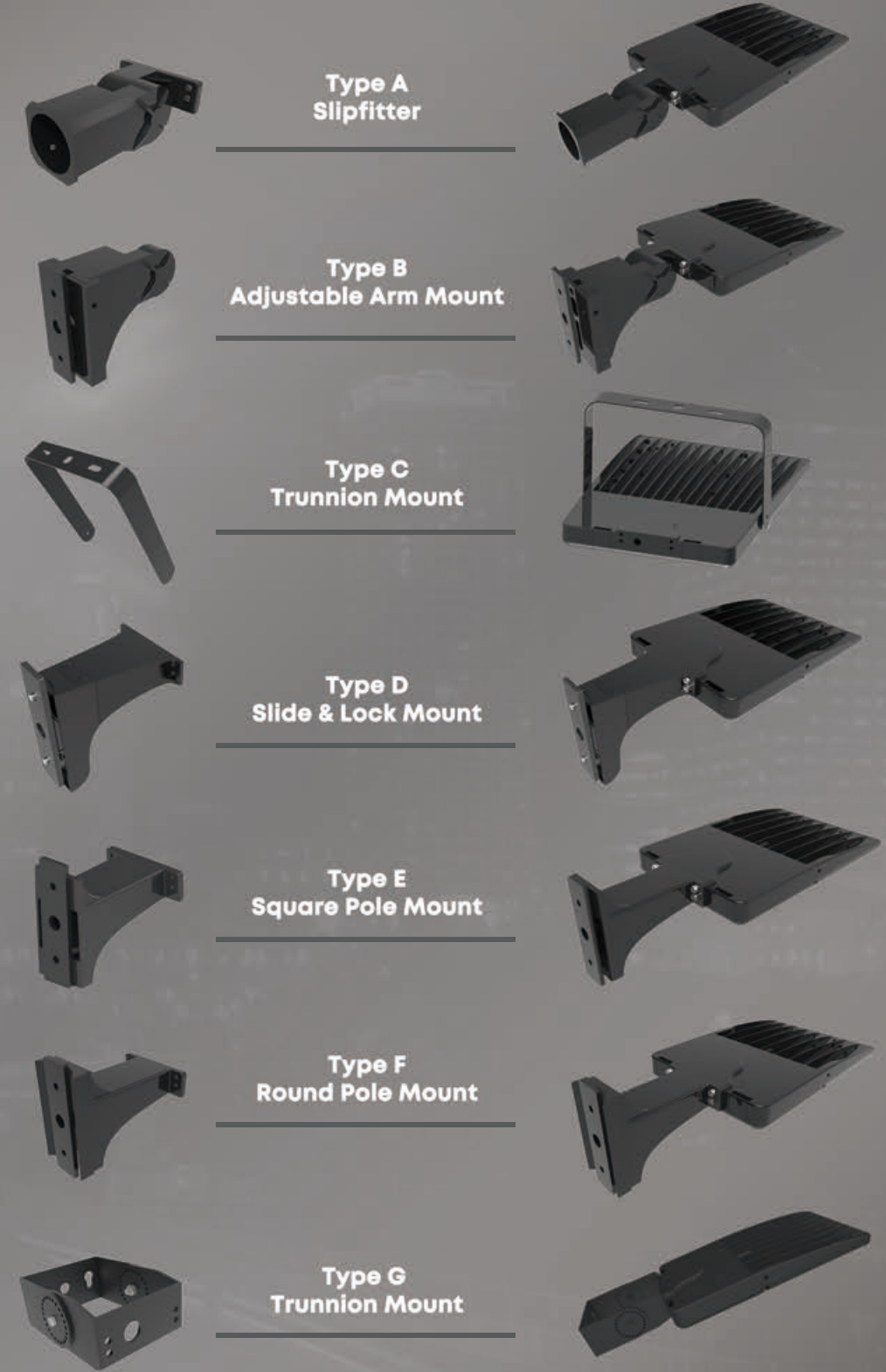
• Buckle design. Top cover space reserved for photocell sensor and bottom reserved for occupancy or PIR sensor with waterproof seal. **Flexible** for future installation.



• **Flexible** design with 90 ° field-rotatable optics, simply rotate the lens and get light distribution in right direction in an instant.



• Up to 7 installation methods (brackets) can be suitable for different installation scenarios, quickly adapt to the needs of the project. Convenient and **Flexible**.



> Application Reference



➤ Application Reference



Parameter Table

Electrical Data

Model	75WoT	115WoT	145WoT	180WoT	200WoT	230WoT	300WoT	420WoT
Power(W)	75 W	115 W	145 W	180 W	200 W	230 W	300 W	420 W
Input voltage	100-277VAC, 50/60Hz, 347/480VAC optional							
THD	7.50%	7.00%	6.50%	7.20%	7.80%	7.70%	3.90%	7.70%
PF	0.98	0.98	0.99	0.98	0.99	0.99	0.99	0.99
Operating temperature	-40°C to 50°C (-40 °F to 122 °F)							
Control Option	DALI, 1-10V/ PWM / timer dimming, Nema, Zhaga, Presence detection sensor. Dim-to-Off with standby power <= 0.5W. DIP switch.							
Driver	Meanwell / Inventronics/Sosen							
Surge Protection	10kV / 20kV optional							

Photometric Data

Efficacy(lm/W) (LUMILEDS, Std. Dev. ±3%)	T301	144 lm/W	131 lm/W	113 lm/W	142 lm/W	140 lm/W	135 lm/W	126 lm/W	T302	166 lm/W	159 lm/W	152 lm/W	169 lm/W	163 lm/W	160 lm/W	153 lm/W	142 lm/W	T401	140 lm/W	135 lm/W	127 lm/W	141 lm/W	140 lm/W	135 lm/W	131 lm/W	T402	167 lm/W	168 lm/W	161 lm/W	170 lm/W	163 lm/W	160 lm/W	149 lm/W	139 lm/W	T501	146 lm/W	135 lm/W	129 lm/W	143 lm/W	140 lm/W	133 lm/W	130 lm/W	T502	169 lm/W	162 lm/W	153 lm/W	173 lm/W	168 lm/W	157 lm/W	155 lm/W	145 lm/W																																																					
Efficacy(lm/W) (SOULE, Std. Dev. ±3%)	T302	171 lm/W	170 lm/W	165 lm/W	173 lm/W	173 lm/W	170 lm/W	167 lm/W	156 lm/W	T402	170 lm/W	169 lm/W	165 lm/W	176 lm/W	175 lm/W	170 lm/W	160 lm/W	150 lm/W	T502	176 lm/W	172 lm/W	169 lm/W	179 lm/W	178 lm/W	170 lm/W	160 lm/W	T301	10765 lm	15066 lm	16378 lm	25648 lm	28058 lm	31123 lm	37868 lm	T302	12467 lm	18253 lm	22001 lm	30435 lm	32576 lm	36908 lm	45817 lm	59512 lm	T401	10501 lm	15518 lm	18401 lm	25456 lm	27930 lm	31121 lm	39157 lm	T402	12528 lm	19327 lm	23367 lm	30683 lm	32662 lm	36911 lm	44763 lm	58579 lm	T501	10984 lm	15579 lm	18656 lm	25744 lm	27916 lm	30492 lm	38953 lm	T502	12708 lm	18577 lm	22179 lm	31142 lm	33572 lm	36052 lm	46479 lm	60867 lm	T302	12819 lm	19495 lm	23976 lm	31191 lm	34599 lm	39156 lm	50167 lm	65599 lm	T402	12761 lm	19491 lm	23992 lm	31766 lm	35074 lm	39185 lm	48053 lm	63203 lm	T502	13176 lm	19824 lm	24540 lm	32145 lm	35672 lm	39569 lm	51087 lm	67305 lm
	ULOR	= 0%, @ Luminaire inclination 0°																																																																																																						
	CCT	3000K, 4000K, 5000K, 5700K, 6500K																																																																																																						
CRI	70Ra, 80Ra, 90Ra optional																																																																																																							
Beam angle	Type III/Type IV/Type V/T512																																																																																																							
LED Manufacturer	LUMILEDS/Souel																																																																																																							
LED model	Lumileds 3030/Lumileds 5050/Souel 5050																																																																																																							
Working current of single LED (mA)	T301	0.065	0.101	0.127(0.12)	0.08	0.088	0.099	0.128	T302	0.033	0.051	0.064	0.044	0.049	0.055	0.071	0.099	T401	0.065	0.101	0.127 (0.12)	0.08	0.088	0.099	0.128	T402	0.033	0.051	0.064	0.044	0.049	0.055	0.071	0.099	T501	0.065	0.101	0.127 (0.12)	0.08	0.088	0.099	0.128	T502	0.033	0.051	0.064	0.044	0.049	0.055	0.071	0.099																																																					
	Lens	Polycarbonate (Better impact resistance than glass)																																																																																																						

Mechanical Data

IP/IK	IP66/IK10, according to standard EN 60529 and EN 62262							
Vibration resistance	3G, conform to standard IEC 68-2-6.							
SCx	Front: 0.113976m²; Front-side: 0.0152m²; Side: 0.02997m²		Front: 0.179268m²; Front-side: 0.0196 m²; Side: 0.03342 m²		Front: 0.201256m²; Front-side: 0.0269 m²; Side: 0.04686 m²			
Housing/Materials	Heavy-duty die-cast aluminum (EN AC-46100)							
Surface treatment	Anti-UV thermosetting polyester / 80 micron epoxy primer + Anti-UV thermosetting polyester (for extremely corrosive environments).							
Painting	Black, Bronze, Custom request							
Cable	Pre-wired with a 70 cm cable (Other lengths on request)							
Mounting	Slip fitter/Arm mount/Yoke mount/Slide & lock/Square pole/Round pole/Trunnion							

Others

Model	75WoT	115WoT	145WoT	180WoT	200WoT	230WoT	300WoT	420WoT
Lifespan	L90B10 > 52000h, @Tq 25°C							
Warranty	5 years (Warranty extension up to 10 years on request)							
Certification	UL/cUL/DLC/FCC/CE/ENEC/SAA/RoHS							
Product size	507*327*185mm	507*327*185mm	507*327*185mm	600*410*185mm	600*410*185mm	600*410*185mm	650*423*380mm	650*440*390mm
Net weight(±10%)	3.7kg	4.0kg	4.0kg	5.6kg	5.6kg	5.6kg	8.9kg	9.6kg
Recommended installation height	General 4-12m, based on actual project requirements							
Application field	Suitable for area lighting such as parking lot, loading bay and street; Tennis court							

Dual LEDs CCT adjustable solution specification

Watt(W)	LED Chips	CCT	Current Output(mA)	Power(W)	Efficacy		
					T302	T402	T502
75	C46+W46	3000	515	74.5	148	149	152
		4000		72.8	161	161	165
		5000		74.16	158	158	162
115	C46+W46	5700	790	75.15	156	156	160
		3000		113.8	144	144	148
		4000		109.3	161	161	165
145	C46+W46	5000	985	112.2	156	156	159
		5700		113.9	151	151	155
		3000		144.4	138	138	141
180	C84+W84	4000	1045	137.4	157	158	161
		5000		141.7	151	150	154
		5700		144.1	146	145	148
200	C84+W84	3000	1155	178.4	150	153	155
		4000		172.6	166	169	171
		5000		177.1	161	165	166
230	C84+W84	5700	1315	179.0	157	161	163
		3000		199.2	147	151	152
		4000		191.2	164	169	170
230	C84+W84	5000	1315	196.4	159	163	164
		5700		199.1	154	158	160
		3000		228.5	144	147	149
230	C84+W84	4000	1315	218.6	163	166	168
		5000		225.1	158	161	161
		5700		228.5	152	155	157

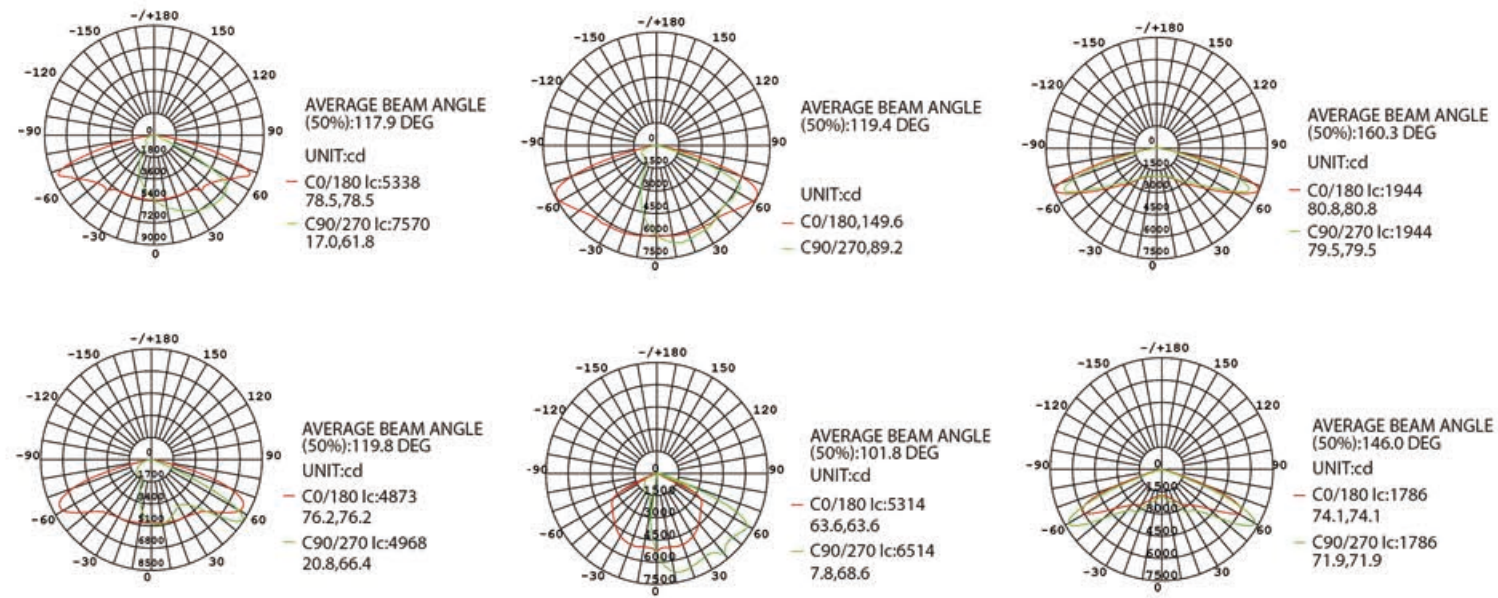
Ordering Information

Aura Renewable Energy	WATTS	VOLTAGE	LED CHIPS	TYPE OF SENSOR	CCT&CRI	DISTRIBUTION	MOUNT	HOUSING	OPTIONS
	75WoT	NV=100-277V	L3=LUMILED 3030	00=Without Sensor	3070=3000K 70CRI	T3=TYPE 3	A=Slip Fitter	BK=Black	SPD 10KV
	115WoT	HV=347/480V	L5=LUMILED 5050	SN=Motion Sensor	4070=4000K 70CRI	T4=TYPE 4	B=Adjustable Arm	BZ=Bronze	SPD 20KV
	145WoT		S5=SOUEL 5050	PH=Photocell	5070=5000K 70CRI	T5=TYPE 5	C=Yoke Mount	WH=White	DIP Switch
	180WoT		W3=SOUEL W3	DV=Dimmable	5770=5700K 70CRI	T512=TYPE T5WQ	D= Slide and Lock	SG=Silver Gray	
	200WoT				6570=6500K 70CRI		E= Square Ploe	RD=Rde	
	230WoT				3080=3000K 80CRI		F= Round Ploe	BL=Blue	
	300WoT				4080=4000K 80CRI		G= Trunnion Mount		
	420WoT				5080=5000K 80CRI				
					5780=5700K 80CRI				
					6580=6500K 80CRI				

OT Series Specification Sheet

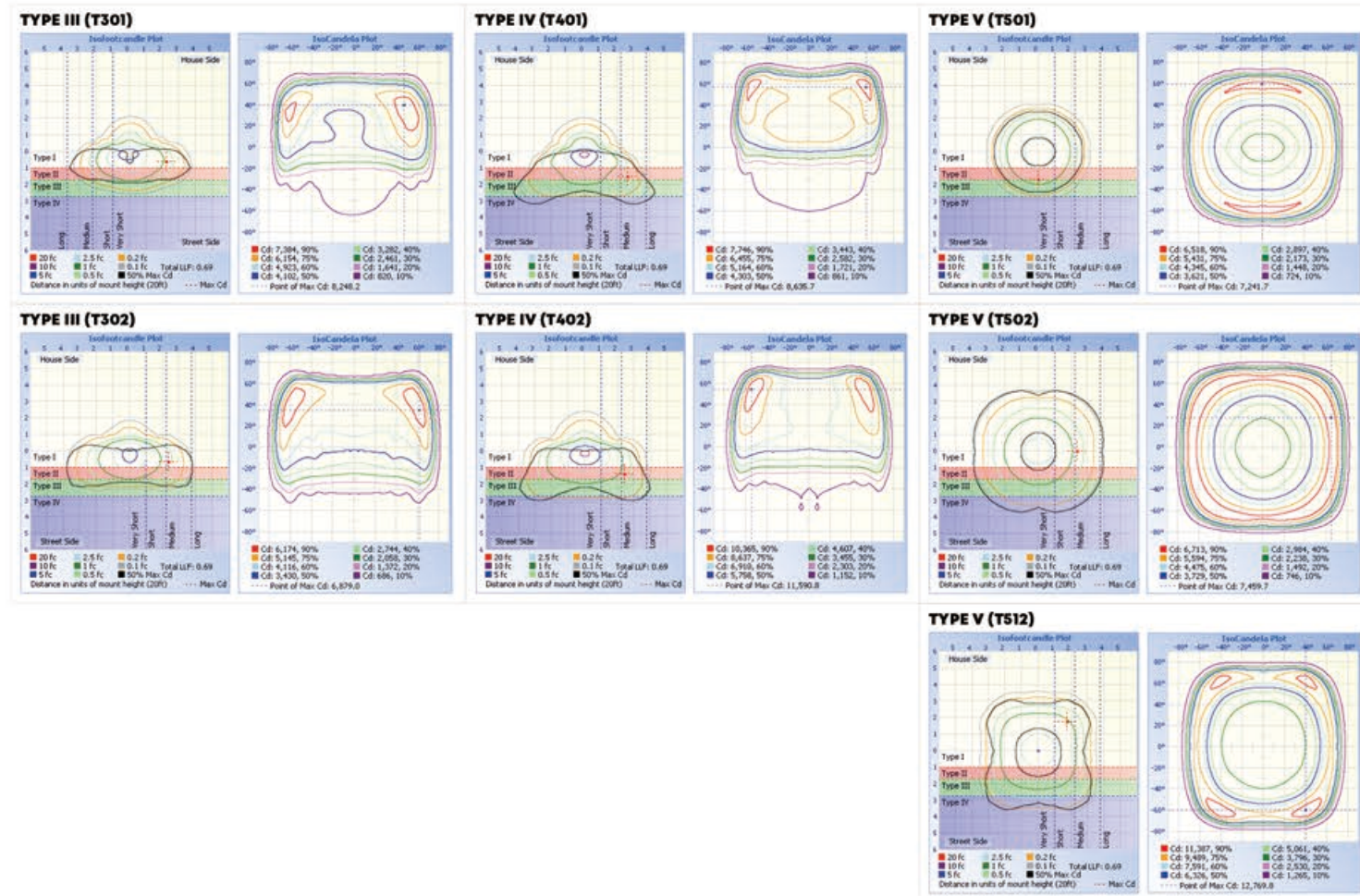
*Due to the constant improvements in product development, individual parameters might change. Please refer to our sales or R&D team for most up-to-date content as specifications are subject to change without notice.

Photometry



*All published Luminaire photometric testing performed to IESNA LM-79-08 standards by a NVLAP accredited Laboratory.

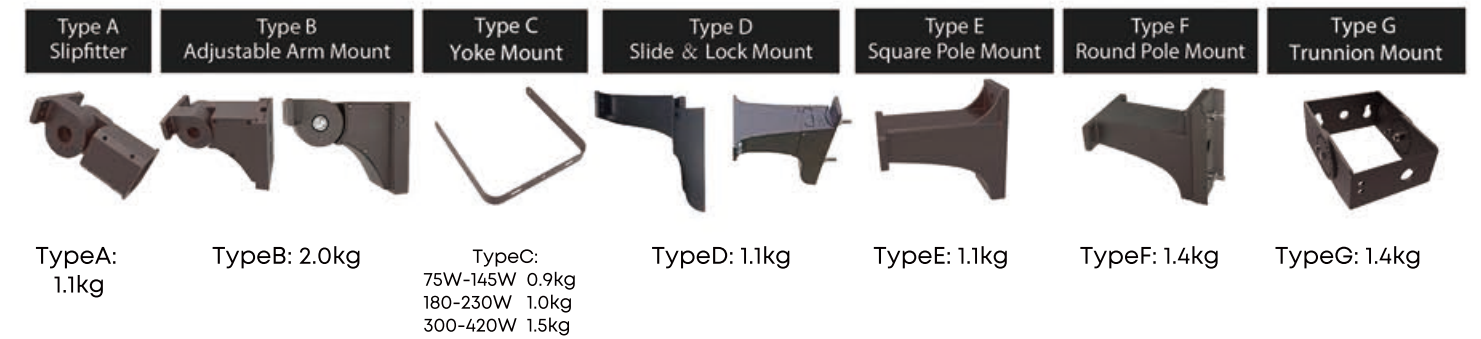
Illuminance Diagram



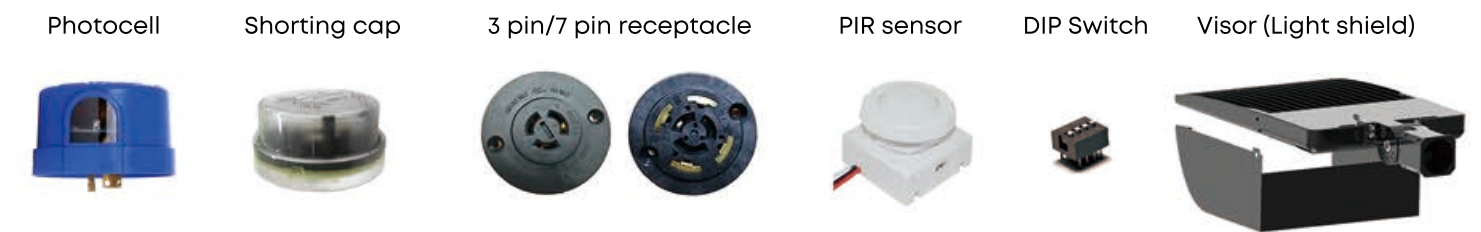
Construction Features

1. Super efficient heat dissipation layer
2. Light source: PCB board with LEDs
3. Die casting aluminum unibody main housing, IP66
4. Space for 5/7 pin receptacle upgradable for photocell sensor and smart systems
5. Tool free buckle to driver access panel
6. Optical grade rotatable PC lens Type III / IV / V
7. Top level 1-10V dimmable driver 100-277V / 347V / 480V optional
8. Tool free driver access panel with space reserved for occupancy sensor covered by removable cap fits with Wattstopper FSP sensor
9. Surge protection device
10. Bracket access panel for wiring
11. Exchangable bracket fits round / square pole. Other brackets optional such as yoke, trunnion, etc

Bracket



Accessories



*As the products are upgraded, the accessories may differ from those described in the pictures. Please consult with our sales team for updated details and order separately.