



**IOH** LED Highbay Light  
60W-240W

## > Features of OH Series

- OH series is designed for Indoor and Industrial lighting, a superior high output, high efficiency LED high bay light, featuring a unique optical design that virtually eliminates glare with minimal impact on performance. It is available in a variety of distributions for lighting applications such as gyms, industrial, multi-purpose rooms in schools, churches, and retails, etc.
- Up to 150lm/W and 170lm/W optional; CCT: 3000K~6500K; CRI: Ra 70~90 available.
- Die-cast aluminum, UV stabilized polyester powder paint finish.
- Light engine is thermally isolated from driver components.
- Rugged, weather-tight design and 3G Vibration ratings ensure durability even in harsh environments.
- Installation: Fixture hook come as standard, pendant mount from 3/4" threaded conduit optional.
- Symmetrical for easy one-for-one replacement of existing high bays.
- 1-10V dimming driver standard, Occupancy sensor, motion sensor, DALI, ZIGBEE wireless control optional.



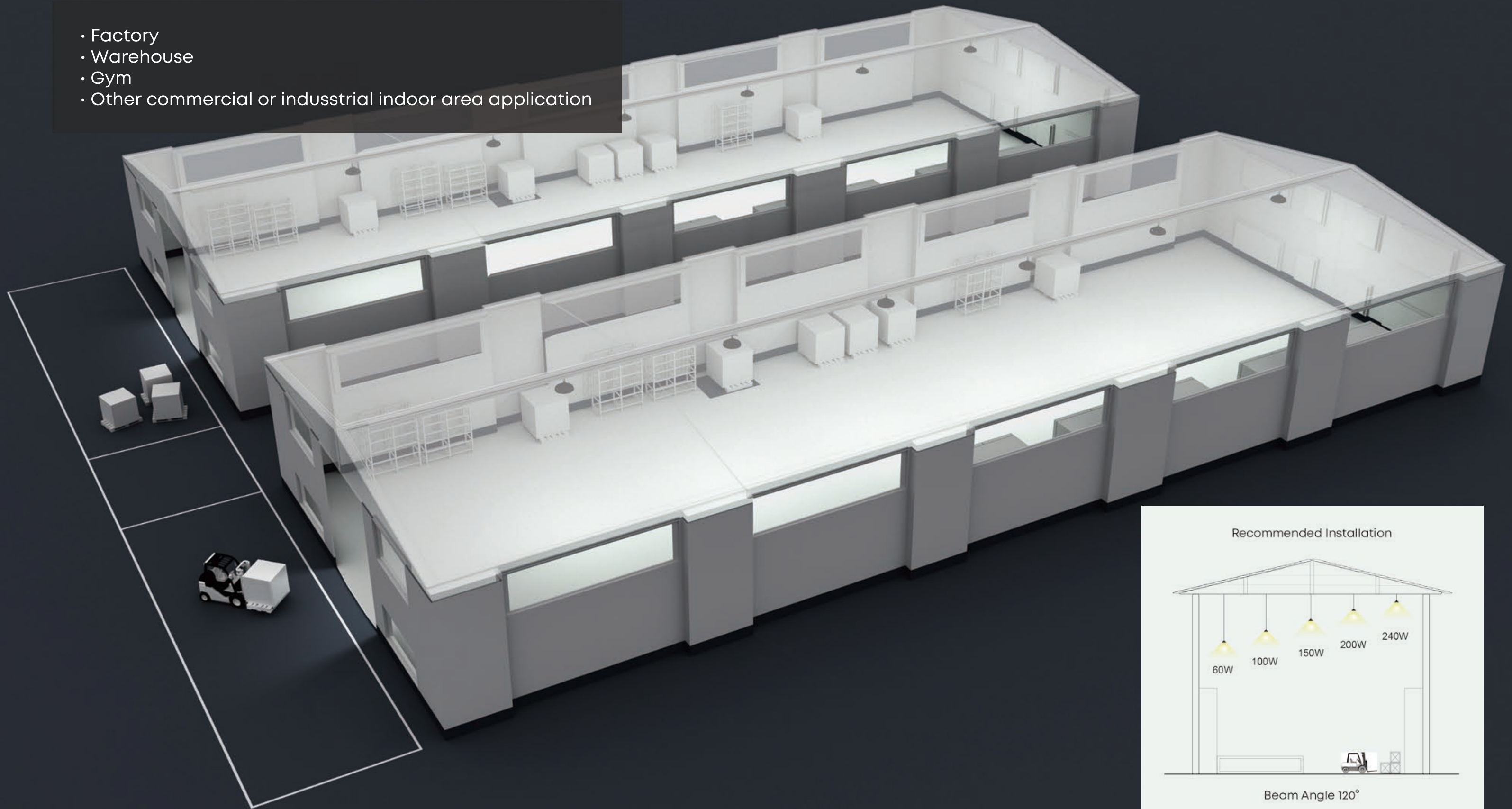
### CONSTRUCTION FEATURES



1. Stainless Eye bolt (or Hook)
2. Waterproof connector easy to replace driver
3. Top level performance light source system efficacy up to 165lm/W
4. Gasket ring
5. Top level performance 1-10V dimmable driver
6. Die casting unibody aluminum fixture housing in supreme heat dissipation ability
7. Optical grade polycarbonate lens 60°/90°/120°/130° optional

# > Application Reference

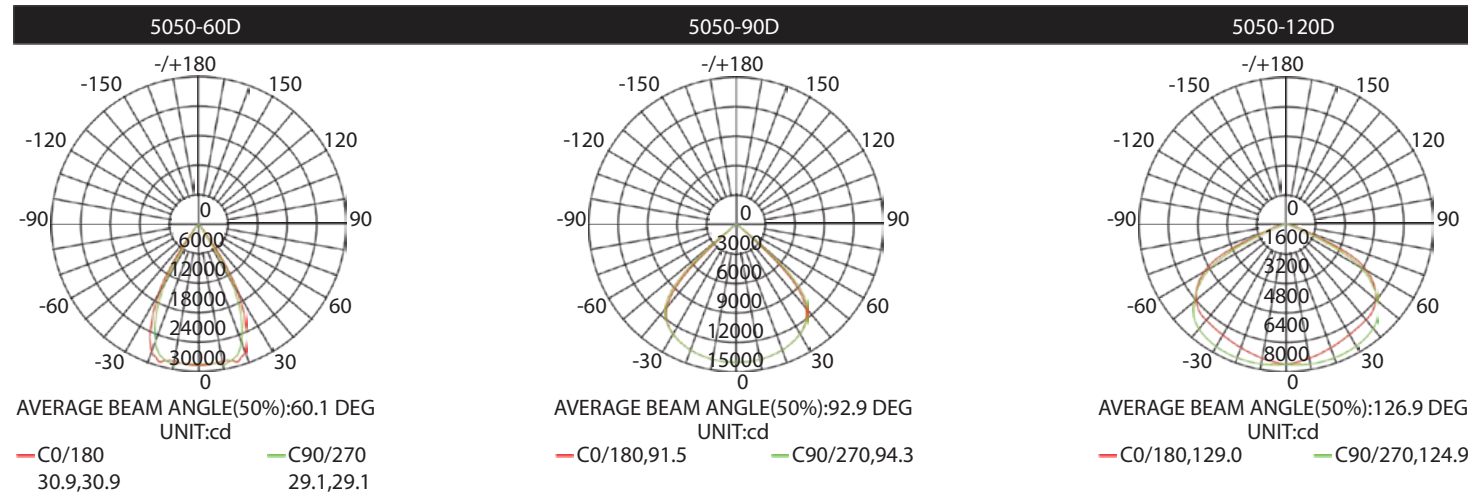
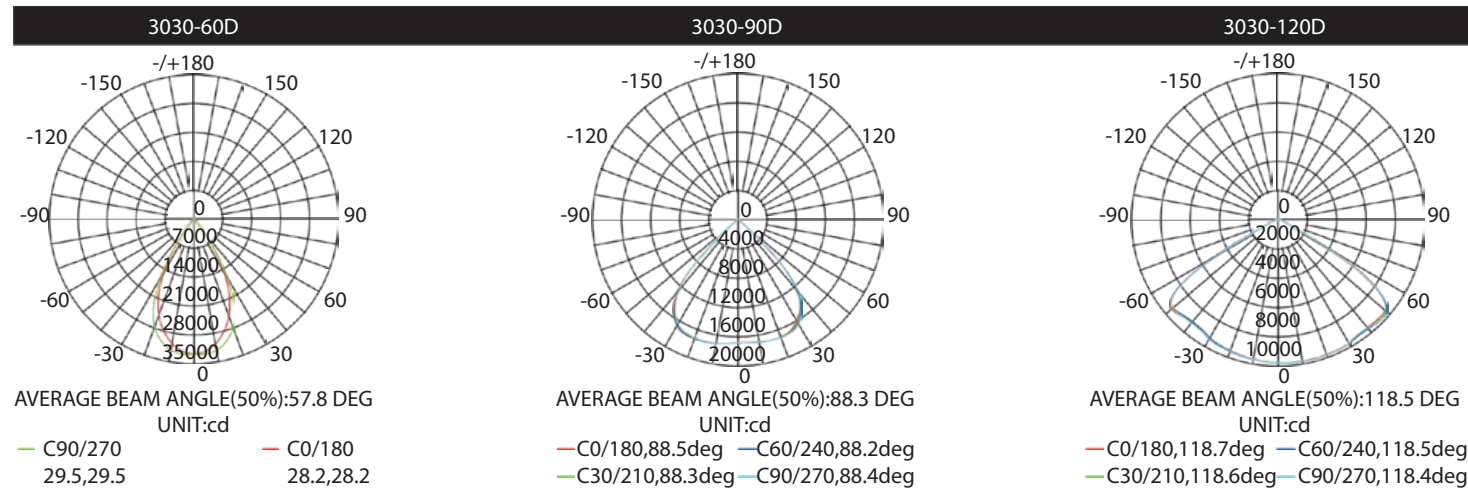
- Factory
- Warehouse
- Gym
- Other commercial or industrial indoor area application



## Parameter Table

MODEL	WATTS	REPLACE MHL	LUMINAIRE LUMEN OUTPUT	IP&IK	NW	PACKING DIMENSION
60WoH	60W	150W-150LPW 200W-170LPW	9000LM / 60° 9240LM / 90° 9060LM / 120° 10440LM / 60° 10682LM / 90° 10059LM / 120°	IP40&IK08	6.4lbs (2.9kg)	"31*31*21cm (12.2*12.2*8.2")"
100WoH	100W	300W-150LPW 350W-170LPW	15000LM / 60° 15100LM / 90° 15200LM / 120° 16724LM / 60° 16672LM / 90° 15788LM / 120°	IP65&IK08	6.4lbs (2.9kg)	"31*31*21cm (12.2*12.2*8.2")"
150WoH	150W	400W-150LPW 500W-170LPW	22500LM / 60° 22950LM / 90° 22650LM / 120° 25851LM / 60° 25738LM / 90° 24881LM / 120°	IP65&IK08	10lbs (4.6kg)	"38*38*22cm (15*15*8.7")"
200WoH	200W	600W-150LPW 750W-170LPW	28200LM / 60° 30600LM / 90° 30000LM / 120° 33982LM / 60° 34529LM / 90° 33159LM / 120°	IP65&IK08	13.7lbs (6.2kg)	"47*47*23cm (18.5*18.5*9")"
240WoH	240W	750W-150LPW 850W-170LPW	36000LM / 60° 36720LM / 90° 36240LM / 120° 39802LM / 60° 40303LM / 90° 39127LM / 120°	IP65&IK08	13.7lbs (6.2kg)	"47*47*23cm (18.5*18.5*9")"

## Photometrics

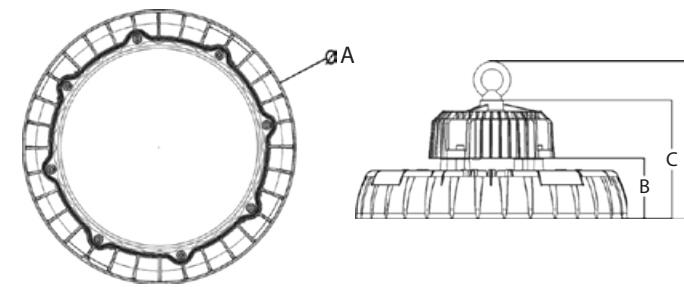


All published Luminaires photometric testing performed to IESNA LM-79-08 standards by a NVLAP accredited Laboratory.

## Ordering Information

Aura Renewable Energy	WATTS	VOLTAGE	LED CHIPS	TYPE OF SENSOR	CCT&CRI	DISTRIBUTION	MOUNT	OPTION	HOUSING
	60WoH	NV=100-277V	L3=LUMILED 3030	00=Without Sensor	3070=3000K 70CRI	60D=60deg	Eye bolt	Black Ring	BK=Black
	100WoH	HV=347/480V	L5=LUMILED 5050	SN=Motion Sensor	4070=4000K 70CRI	90D=90deg	Yoke Mount	Orange Ring	
	150WoH			PH=PhotoCell	5070=5000K 70CRI	120D=120deg	Chain Mount	10% Up Light	
	200WoH			DV=Dimmable	5770=5700K 70CRI	130D=130DEG		Light Shield	
	240WoH				3080=3000K 80CRI				
					4080=4000K 80CRI				
					5080=5000K 80CRI				
					5780=5700K 80CRI				

## Dimension



A	B	C	D
Dimensions of 60W and 100W models			
24.8cm/9.8'	7.1cm/2.8'	13.8cm/5.4'	18.2cm/7.2'
Dimensions of 150W model			
31.9cm/12.6'	7.1cm/2.8'	13.8cm/5.4'	18.3cm/7.2'
Dimensions of 200W and 240W models			
40.0cm/15.8'	7.1cm/2.8'	14.1cm/5.5'	20.2cm/7.5'

## Mount & Accessories



## OH Series Specification Sheet

\*Due to the constant improvements in product development, individual parameters might change. Please refer to our sales or R&D team for most up-to-date content as specifications are subject to change without notice.