



**I OFS** LED STADIUM LIGHT  
LED FLOOD LIGHT



## > Features of OFS Series

OFS series is designed for exterior sports lighting, a superior high output, high efficiency LED flood light, featuring a unique optical design that virtually eliminates glare with minimal impact on performance. It is available in a variety of flood distributions for lighting applications such as large areas, port and rail centers, exterior sports.

- Heavy duty die-cast aluminum housing;
- Driver compartment can be either installed onto or separated from the light fixture;
- Light engine is thermally isolated from driver component;
- UV stabilized polyester powder paint finish;
- Modular optical assemblies enable easy maintenance.
- Horizontal and vertical aiming.

|                                    |  |   |  |
|------------------------------------|--|---|--|
| <b>UP TO</b><br><b>165</b><br>lm/W | <b>100-277V</b><br>OR<br><b>347-480V</b><br><b>50/60HZ</b> | <b>Working Temperature Environment</b><br><b>-40°C~50°C</b><br>(-40°F~+122°F) | <b>THD</b><br><b>&lt;20%</b>   |
| <b>CRI</b><br><b>70/80/90</b>      | • 3000K<br>• 4000K<br>• 5000K<br>• 5700K<br>• 6500K        | <b>UGR</b><br><b>&lt;19</b>   | <b>L90B10</b><br><b>&gt;52000hrs</b><br><b>@ 25°C</b>                                |
| <b>ANTI-GLARE DESIGN</b>           | <b>IP66</b><br><b>IK10</b>                                 | <b>DIM</b>  |  |



**300W-460W**

**750W-960W**

# Better Performance Starts with Better Lighting



# > High Mast Lighting

Pole top Luminaries Assembly

Wire Harness

Pole top Luminaries Assembly

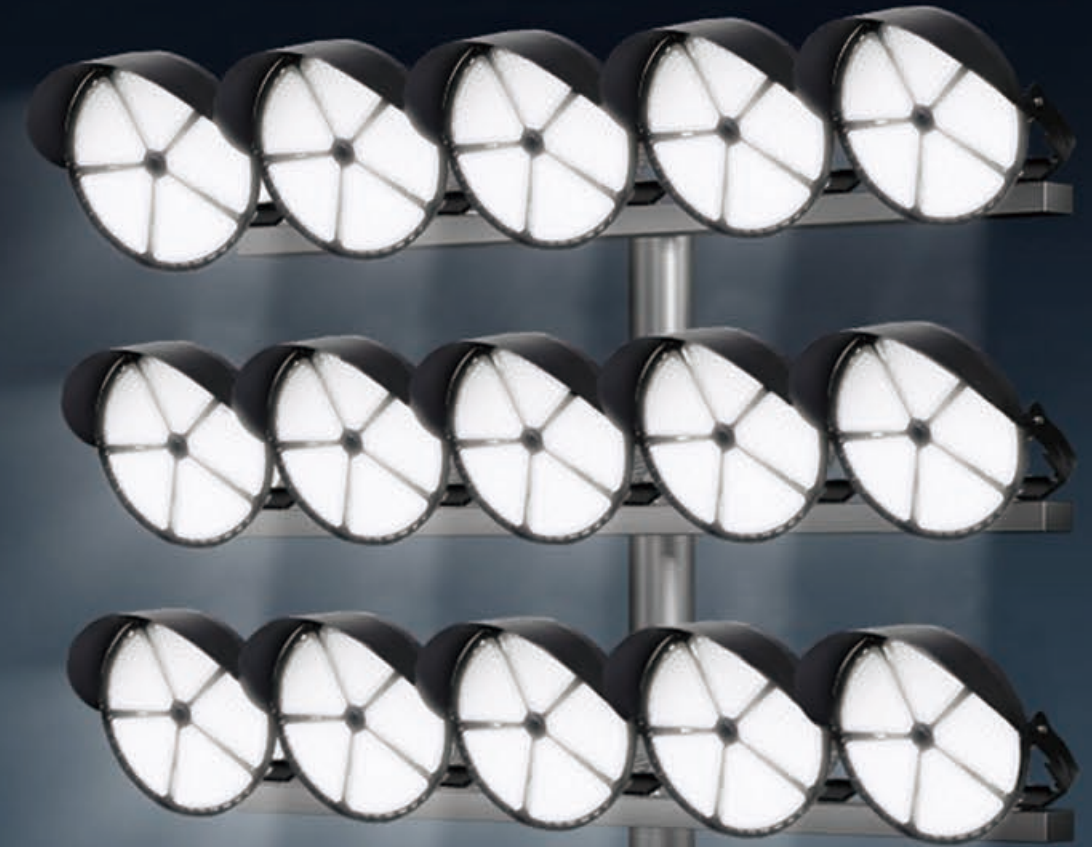
Galvanized Steel Pole

Option:  
Drivers installed remotely from the fixture body and stay in reserved space. (Cable length between fixture body and driver should be confirmed beforehand)

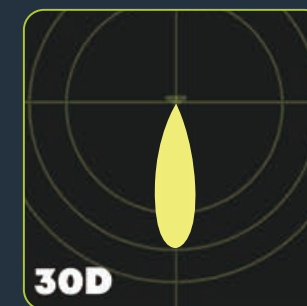
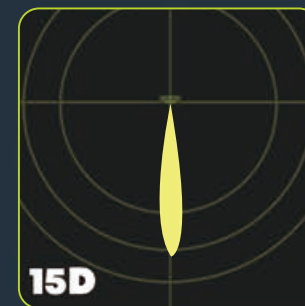
Electrical Components Enclosure

Precast Concrete Base

Integrated lightning Ground System



## Photometric Design





## > Application Reference





## > Application Reference



## Parameter Table

| Electrical Specifications                                 |   |          |  |          |           |           |
|---|---|----------|--|----------|-----------|-----------|
| Model   | 300WoFS   | 400WoFS  | 460WoFS  | 750WoFS  | 960WoFS   |           |
| Power(W)  | 300 W   | 400 W    | 460 W  | 750 W    | 960 W     |           |
| Input voltage   | 100-277VAC, 50/60Hz, 347/480VAC optional  |          |  |          |           |           |
| THD   | <20%  |          |  |          |           |           |
| PF  | >0.90   |          |  |          |           |           |
| UGR   | <19   |          |  |          |           |           |
| Control Option  | DALI, 1-10V/ PWM/ timer dimming, Nema, Zhaga, Photocell.  |          |  |          |           |           |
| Operating temperature                                     | -40°C to 50°C (-40 °F to 122 °F)  |          |  |          |           |           |
| Driver brand  | Meanwell  |          |  |          |           |           |
| Surge Protection  | 10kV / 20kV optional  |          |  |          |           |           |
| Photometric Specifications                                |   |          |  |          |           |           |
| Efficacy(lm/W)<br>(CRI 70Ra, 4000K)<br>(Std. Dev ±3%)     | 15D   | 150 lm/W | 145 lm/W   | 140 lm/W | 145 lm/W  | 130 lm/W  |
|   | 30D   | 165 lm/W | 163 lm/W   | 160 lm/W | 145 lm/W  | 130 lm/W  |
|   | 60D   | 165 lm/W | 163 lm/W   | 160 lm/W | 145 lm/W  | 130 lm/W  |
|   | 90D   | 165 lm/W | 163 lm/W   | 160 lm/W | --        | --        |
| Luminous flux (lm)<br>(CRI 70Ra, 4000K)<br>(Std. Dev ±3%) | 15D   | 45000 lm | 58000 lm   | 64400 lm | 108750 lm | 124800 lm |
|   | 30D   | 49500 lm | 65200 lm   | 73600 lm | 108750 lm | 124800 lm |
|   | 60D   | 49500 lm | 65200 lm   | 73600 lm | 108750 lm | 124800 lm |
|   | 90D   | 49500 lm | 65200 lm   | 73600 lm | --        | --        |
| ULOR  | = 0%, @ Luminaire inclination 0°  |          |  |          |           |           |
| CCT   | 3000K, 4000K, 5000K, 5700K, 6500K   |          |  |          |           |           |
| CRI   | Ra70, Ra80, Ra90 optional   |          |  |          |           |           |
| Beam angle  | 15D/30D/60D/90D   |          | 15D/30D/60D  |          |           |           |
| Mechanical Specifications                                 |   |          |  |          |           |           |
| IP/IK   | IP66/IK10, according to standard EN 60529 and EN 62262  |          |  |          |           |           |
| Vibration resistance                                      | 3G, conform to standard IEC 68-2-6.   |          |  |          |           |           |
| SCx (EPA)   | Front: 0.30658m <sup>2</sup> (3.29ft <sup>2</sup> ) ;<br>Side: 0.283354m <sup>2</sup> (3.04ft <sup>2</sup> )                    |          | Front: 0.265331m <sup>2</sup> (2.86ft <sup>2</sup> );<br>Side: 0.255483m <sup>2</sup> (2.75ft <sup>2</sup> ) |          |           |           |
| Housing/Materials   | Heavy-duty die-cast aluminum (EN AC-46100)  |          |  |          |           |           |
| Surface treatment   | Anti-UV thermosetting polyester/80 micron epoxy primer, Anti-UV thermosetting polyester (for extremely corrosive environments). |          |  |          |           |           |
| Painting  | Black, Custom request   |          |  |          |           |           |
| Cable   | Pre-wired with a 1.5m cable (Other lengths on request)  |          |  |          |           |           |
| Mounting  | Under Mount Yoke (with or without driver box)   |          |  |          |           |           |
| LED   |   |          |  |          |           |           |
| LED manufacturer  | LUMILEDS/Seoul  |          |  |          |           |           |
| LED model   | Lumileds 5050/Seoul 3535  |          |  |          |           |           |
| Number of LED   | 15D   | 140      | 140  | 140      | 420       | 420       |
|   | 30D   | 280      | 350  | 350      | 420       | 420       |
|   | 60D   | 280      | 350  | 350      | 420       | 420       |
|   | 90D   | 280      | 350  | 350      | *         | *         |
| Working current of single LED(NV/HV)                      | 15D   | 88       | 117  | 135      | 74/604    | 94/773    |
|   | 30D   | 173      | 47   | 54       | 74/604    | 94/773    |
|   | 60D   | 173      | 47   | 54       | 74/604    | 94/773    |
|   | 90D   | 173      | 47   | 54       | *         | *         |
| Lens  | Polycarbonate, modular design   |          |  |          |           |           |
| Others  |   |          |  |          |           |           |
| Lifespan  | L90B10 > 52000h, @Ta 25°C   |          |  |          |           |           |
| Warranty  | 5 years (Warranty extension up to 10 years on request)  |          |  |          |           |           |
| Certification   | UL/cUL/DLC/FCC/CE/ENEC/SAA/GS   |          |  |          |           |           |
| Product size  | φ554*313mm  |          | φ545*275mm   |          |           |           |
| Net Weight  | 20kg  |          | 27kg   |          |           |           |
| Carton size   | 740*680*300mm   |          | 800*740*350mm  |          |           |           |
| Gross weight  | 23kg  |          | 31.5kg   |          |           |           |
| Application field   | Suitable for sports field, stadium, port, railway station, large out area.  |          |  |          |           |           |

## Construction

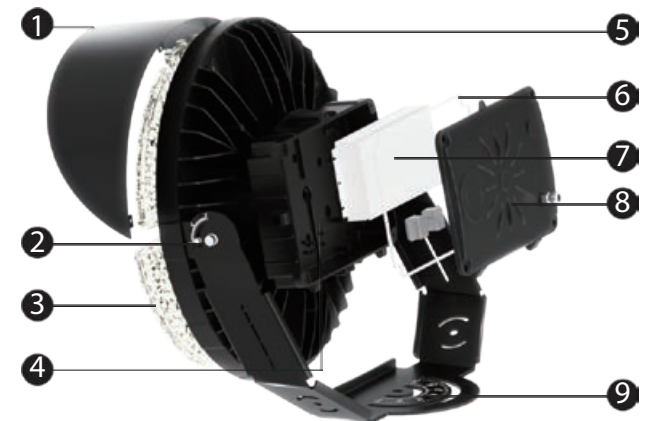
- Heavy duty die-cast aluminum housing.
- Driver compartment can be separated from the light fixture, reduced on the gross weight.
- Light engine is thermally isolated from the driver compartment.
- UV stabilized polyester powder paint finish.

## Finish

- Rugged, weather-tight design and 3G Vibration ratings ensure durability even in harsh environments.

## Construction Features of OFS Series

1. Visor (light shield)
2. Tilttable arm
3. Light source: top level performance LEDs, system efficacy up to 170lm/W
4. Space reserved for photocell sensor
5. Die casting fixture body
6. Gasket
7. Top level performance driver 1-10V dimmable
8. Driver box cover
9. 0 - ±90° Rotatable bracket



## Optical/Electric

- Professional light distributions to maximize performance: 15°, 30°, 60°, 90° (only for 300W-460W).
- Working temperature: -40°C to 50°C (-40°F to 122°F);
- 1-10V dimming driver device standard.
- Voltage option: 100-277VAC, 50/60HZ standard; 347V-480V, 50/60Hz optional.
- 10KV or 20KV SPD (surge protection device) optional.

## Ordering Information

| Aura Renewable Energy | WATTS   | VOLTAGE     | LED CHIPS       | TYPE OF SENSOR    | CCT&CRI          | DISTRIBUTION | DRIVER             | MOUNT                   |
|-----------------------|---------|-------------|-----------------|-------------------|------------------|--------------|--------------------|-------------------------|
|                       | 300WoFS | NV=100-277V | L5=LUMILEDS5050 | 00=Without Sensor | 3070=3000K 70CRI | 15D=15deg    | INTEGRAL           | UNDER MOUNT YOKE        |
|                       | 400WoFS | HV=347/480V | *S3=Seoul 3535  | SN=Motion sensor  | 4070=4000K 70CRI | 30D=30deg    | REMOTE             |                         |
|                       | 460WoFS |             |                 | PH=Photocell      | 5070=5000K 70CRI | 60D=60deg    |                    |                         |
|                       | 750WoFS |             |                 | DV=Dimmable       | 5770=5700K 70CRI | *90D=90deg   |                    |                         |
|                       | 960WoFS |             |                 |                   | 6570=6500K 70CRI |              | <b>Accessories</b> |                         |
|                       |         |             |                 |                   | 3080=3000K 80CRI |              |                    | SPD 10kV, 20kV optional |
|                       |         |             |                 |                   | 4080=4000K 80CRI |              |                    | Light visor             |
|                       |         |             |                 |                   | 5080=5000K 80CRI |              |                    |                         |
|                       |         |             |                 |                   | 5780=5700K 80CRI |              |                    |                         |
|                       |         |             |                 |                   | 6580=6500K 80CRI |              |                    |                         |

\*90D is only available for 300W-460W

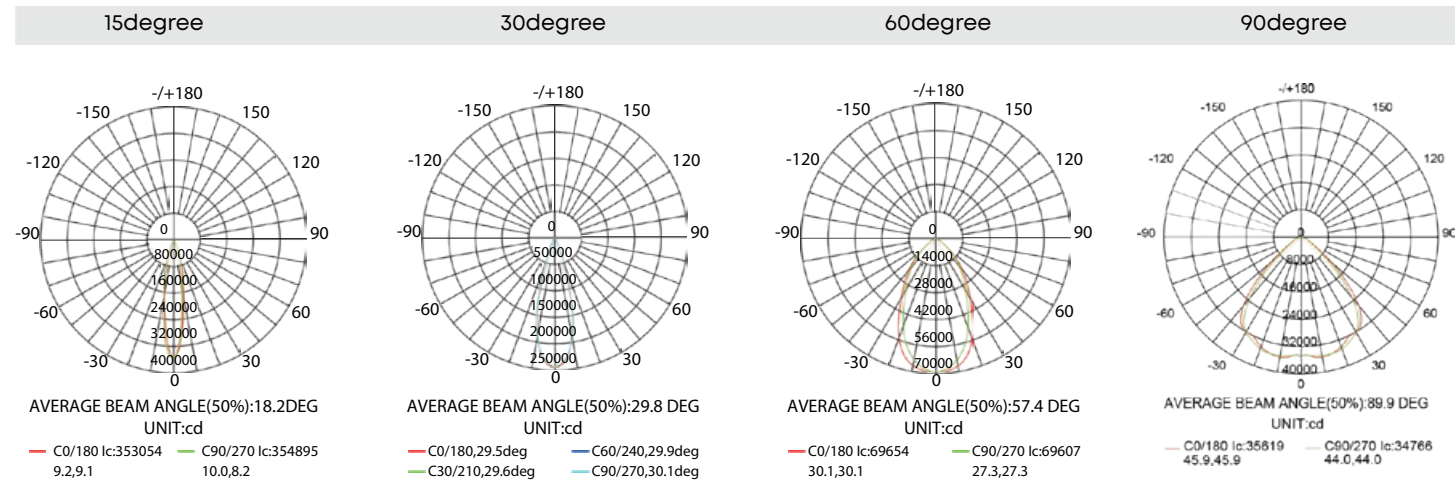
\*Seoul 3535 is only available for 750W-960W

## OFS Series Specification Sheet

\*Due to the constant improvements in product development, individual parameters might change. Please refer to our sales or R&D team for most up-to-date content as specifications are subject to change without notice.

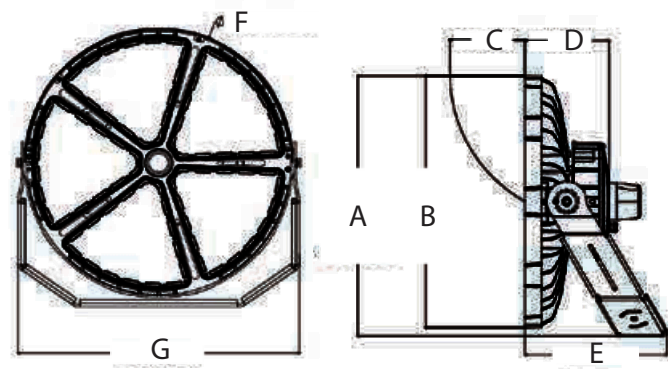


## Photometrics



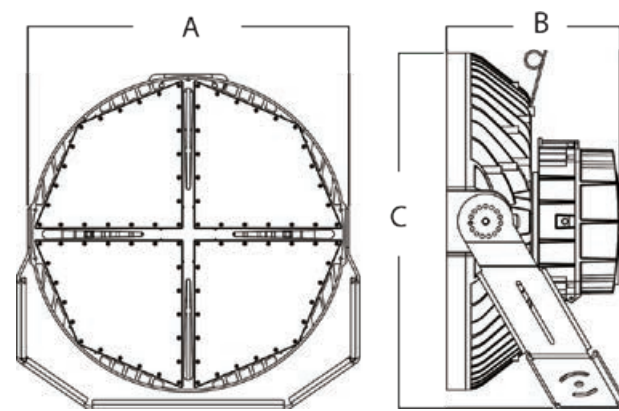
## Dimensions

300W-460W



| A          | B           | C          | D         |
|------------|-------------|------------|-----------|
| 57.3cm/23' | Φ55.4cm/22' | 16.5cm/6'  | 18.6cm/7' |
| E          | F           | G          |           |
| 31.3cm/12' | 55.6cm/22'  | 58.1cm/23' |           |

720W-960W



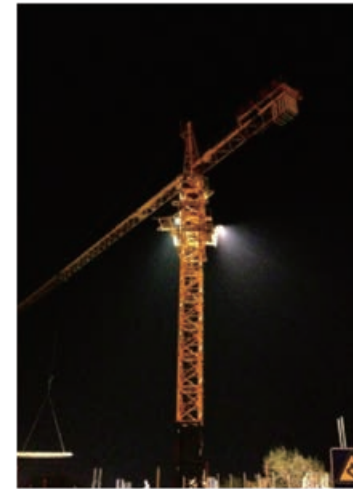
| A            | B            | C            |
|--------------|--------------|--------------|
| 54.5cm/21.5' | 27.5cm/10.9' | 56.4cm/22.2' |

## Accessories



\*As the products are upgraded, the accessories may differ from those described in the pictures. Please consult with our sales team for updated details and order separately.

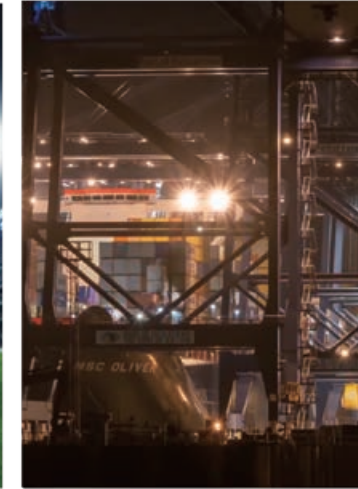
## Recommended Installation



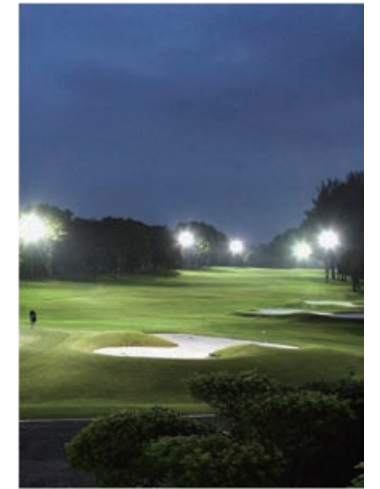
Building site



Indoor and outdoor courts



Sea port



Golf course